

Featured Project > Research

Moffitt Hospital 15th Floor Acute Care Nursing Unit

3333 California Street,
San Francisco, CA

Project Manager: Cristina Lindow

Firm: NBBJ

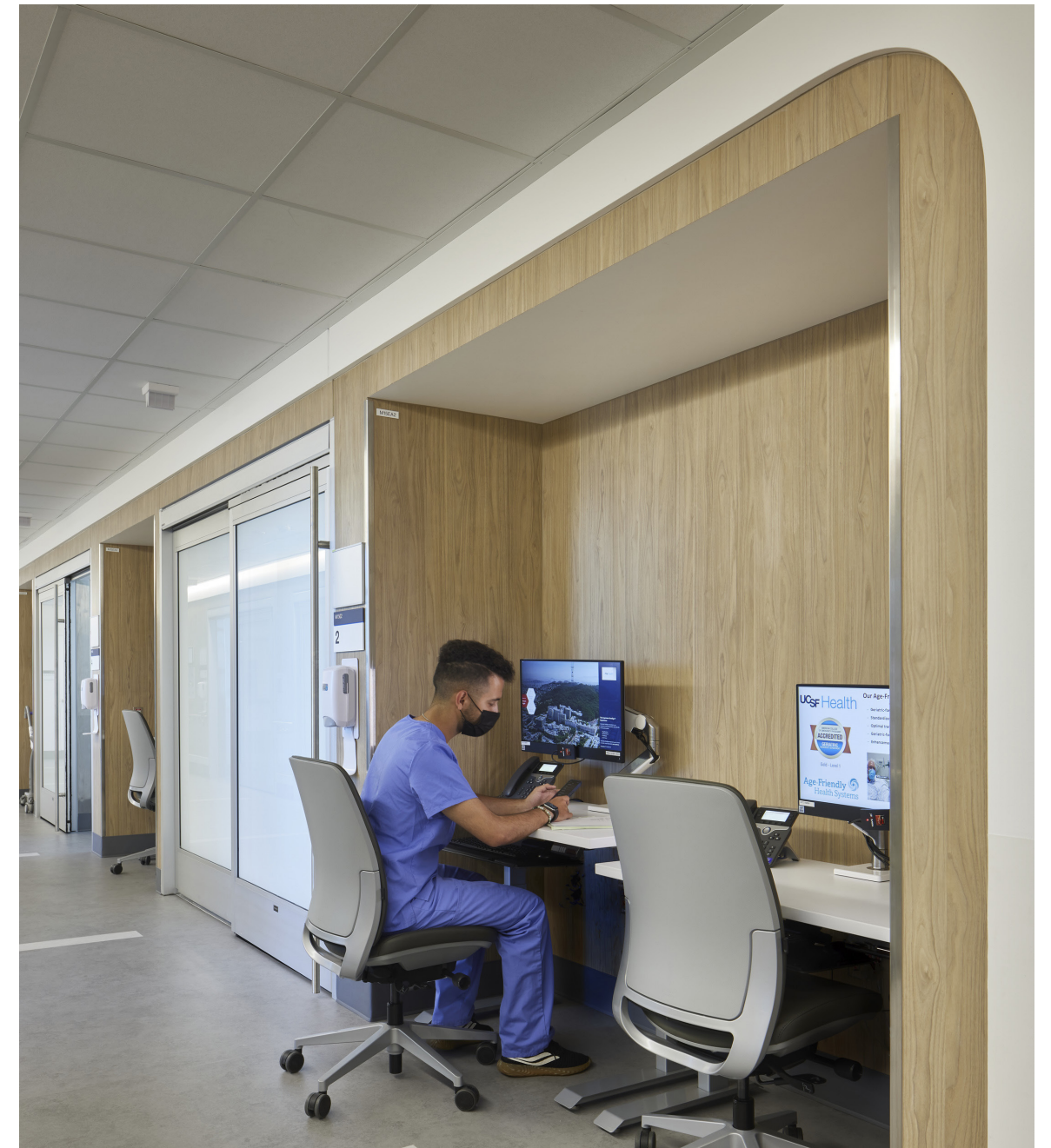
Completed 2019

Moffitt Hospital 15th Floor Acute Care Nursing Unit

Nurse Station

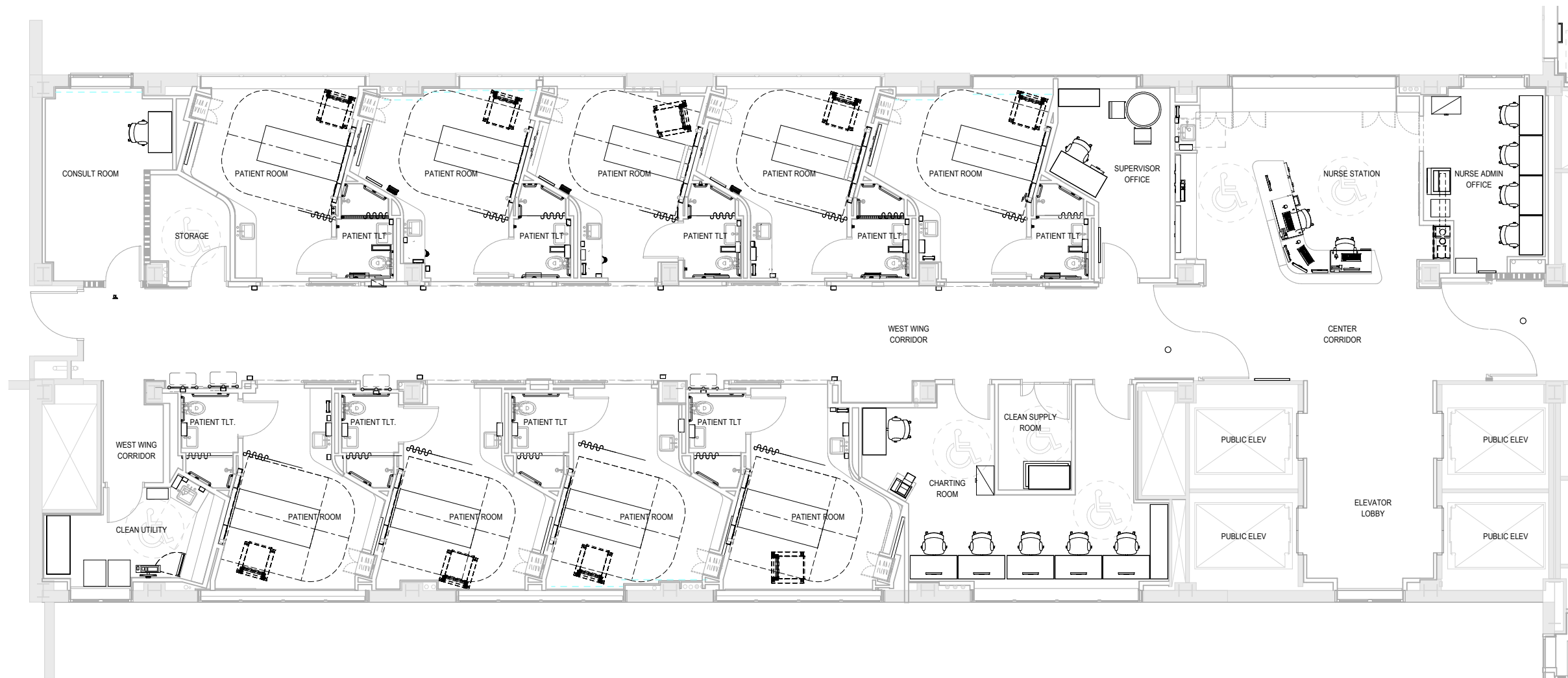


Work Area



Moffitt Hospital 15th Floor Acute Care Nursing Unit

Furniture Plan - West Wing



Moffitt Hospital 15th Floor Acute Care Nursing Unit

Floor Finish Plan - West Wing



Moffitt Hospital 15th Floor Acute Care Nursing Unit

Reflected Ceiling Plan - West Wing



Moffitt Hospital 15th Floor Acute Care Nursing Unit

Finish Schedule

KEY	TYPE	PRODUCT	COLOR	FINISH	MANUFACTURER	SIZE	COMMENTS	FRAME SPREAD AND SMOKE-DEVELOPE...
TILE								
CT-1	PORCELAIN TILE	JAVA JOINT	HOUSE BLEND	NA	CROSSVILLE	12" X 24"	FLOOR	CLASS A IN ACCORDANCE WITH ASTM E84 AND/OR UL 723
CT-2	HANDBAINTED TILE	SAKURA COLLECTION	SUMMIT	WHITE	FIRECLAY	8" X 8"	WALLS BACKSPLASH	CLASS A IN ACCORDANCE WITH ASTM E84 AND/OR UL 723
CT-3	PORCELAIN TILE	JAVA JOINT	HOUSE BLEND	NA	CROSSVILLE	8" X 12"	COVERED WALL BASE	CLASS A IN ACCORDANCE WITH ASTM E84 AND/OR UL 723
CT-6	PORCELAIN TILE	SIMPATICO	FELLOWSHIP (WHITE)	STATIN	CROSSVILLE	6" X 4"	WALLS - INSTALL IN VERTICAL STACK PATTERN, TYPICAL	CLASS A IN ACCORDANCE WITH ASTM E84 AND/OR UL 723
CT-6	CARPET TILE	TBD	TBD	NA	TBD	24" X 24"	FLOOR	CLASS A IN ACCORDANCE WITH ASTM E84 AND/OR UL 723
GROUT								
GT-1	TO BE SELECTED	TO BE SELECTED	TO BE SELECTED	TO BE SELECTED	TO BE SELECTED	NA	EPOXY GROUT (TO BE USED WITH CT-1, CT-3, AND CT-6)	CLASS A IN ACCORDANCE WITH ASTM E84 AND/OR UL 723
GT-2	TO BE SELECTED	TO BE SELECTED	TO BE SELECTED	TO BE SELECTED	TO BE SELECTED	NA	TO BE USED WITH CT-2	CLASS A IN ACCORDANCE WITH ASTM E84 AND/OR UL 723
RESILIENT FLOORING								
SPUR-1	RESILIENT SHEET POLYURETHANE	WINEO 1500 FUSION XL PLR113C	PURE THREE	NA	PURLINE	2.5 mm X 6' 6 3/4" X 65'-7" approx	RESILIENT SHEET FLOORING	CLASS A IN ACCORDANCE WITH ASTM E84 AND/OR UL 723
SPUR-2	RESILIENT SHEET POLYURETHANE	WINEO 1500 FUSION XL PLR112C	PURE TWO	NA	PURLINE	2.5 mm X 6' 6 3/4" X 65'-7" approx	RESILIENT SHEET FLOORING	CLASS A IN ACCORDANCE WITH ASTM E84 AND/OR UL 723
RS-3	RESILIENT SHEET RUBBER	NORAMENT ROUND	8884 DUST GREY	NA	NORA	0.18" X 19.88" X 50.59"	RESILIENT SHEET FLOORING	CLASS A IN ACCORDANCE WITH ASTM E84 AND/OR UL 723
STATIC DISSIPATIVE FLOORING								
SDSFR-1	ELECTRO STATIC DISSIPATIVE FLOORING- RUBBER SHEET	NORAPLAN ENVRONCARE ED	2931 SMOKEY FENNEL	NA	NORA FLOORING	NA (SHEET)	-	CLASS A IN ACCORDANCE WITH ASTM E84 AND/OR UL 723
WALL BASE								
RWRB-1	RUBBER	RUBBER WALL BASE	A46	NA	ALLSTATE	6"	-	CLASS A IN ACCORDANCE WITH ASTM E84 AND/OR UL 723
RWRB-2	RUBBER	RUBBER WALL BASE	A46	NA	ALLSTATE	4"	-	CLASS A IN ACCORDANCE WITH ASTM E84 AND/OR UL 723
WB-2	INTEGRAL COVE	COVERED FLOORING	INTEGRAL/MATCHES FLOORING	MATCHES FLOORING	MATCHES FLOORING	6"	IN NORTH WING PATIENT ROOMS, UTILITY RMS, JANITOR CLOSET, NOURISHMENT	CLASS A IN ACCORDANCE WITH ASTM E84 AND/OR UL 723
WB-3	METAL BASE	SCHLUTER DESIGNBASE-SL	ANNODIZED	ANNODIZED	SCHLUTER	3 1/8"	AT ELEVATOR LOBBY	CLASS A IN ACCORDANCE WITH ASTM E84 AND/OR UL 723
SOLID SURFACE								
SSM-1	1/2" SOLID SURFACE	SOLID SURFACE	DESIGNER WHITE, D354SL	NA	WILSONART	30" X 145" slts	COUNTERTOPS AND WINDOW SILLS	CLASS A IN ACCORDANCE WITH ASTM E84 AND/OR UL 723
SSM-1S	SOLID SURFACE SINK	SINK MODEL BY1514-ADA	BRIGHT WHITE	NA	WILSONART	16 3/4" X 15 3/8" X 5 1/4" deep	TYPICAL INTEGRAL SINK	CLASS A IN ACCORDANCE WITH ASTM E84 AND/OR UL 723
SSM-2	1/2" SOLID SURFACE	SOLID SURFACE	DEEP CLOUD	NA	CORIAN	MATCH DOORWAY	TOILET RM THRESHOLDS	CLASS A IN ACCORDANCE WITH ASTM E84 AND/OR UL 723
SSM-3	1/4" SOLID SURFACE	SOLID SURFACE	WHITE, B016	SATIN	ARONITE	36" X 36" 48" X 36" 60" X 36" slts	SHOWER SURROUNDS	CLASS A IN ACCORDANCE WITH ASTM E84 AND/OR UL 723
PAN-1, PAN-2	SOLID SURFACE SHOWER PAN	CUSTOM SIZE SHOWER RECEPTOR W/ BIOPRISM SOLID SURFACE	TBD	NON-SLIP	INPRO	CUSTOM	PROVIDE MOCK UP OF TYP SHOWER PAN, SCAN FOR REBAR TO DETERMINE...	CLASS A IN ACCORDANCE WITH ASTM E84 AND/OR UL 723
PAN-3	SOLID SURFACE SHOWER PAN- ACCESSIBLE	AS-S3009ADNF AQUASURF ROLL-IN W/ INTEGRAL FRONT TRENCH DRAIN	GRAY GRANITE	NON-SLIP	WILLOUGHBY	62" X 33 3/4"	SCAN FOR REBAR TO DETERMINE DRAIN LOCATIONS	CLASS A IN ACCORDANCE WITH ASTM E84 AND/OR UL 723
LAMINATES								
PLAM-1	HIGH PRESSURE LAMINATE	TRACELESS	SILVER VELVET 15503-31	TRACELESS	WILSONART	NA	HIGH WEAR OVERLAY, THRU COLOR	CLASS A IN ACCORDANCE WITH ASTM E84 AND/OR UL 723
PLAM-2	NOT USED	NOT USED	NOT USED	NOT USED	NOT USED	NOT USED	NOT USED	CLASS A IN ACCORDANCE WITH ASTM E84 AND/OR UL 723
PLAM-3	HIGH PRESSURE LAMINATE	HPL	3104WINE	EASTERN WALNUT	INTERIOR ARTS	NA	HIGH WEAR OVERLAY, THRU COLOR	CLASS A IN ACCORDANCE WITH ASTM E84 AND/OR UL 723
PLAM-4	HIGH PRESSURE LAMINATE	HPL	SNOW WHITE VELVET	TRACELESS	WILSONART	NA	HIGH WEAR OVERLAY, THRU COLOR	CLASS A IN ACCORDANCE WITH ASTM E84 AND/OR UL 723
FR-1	FIBER REINFORCED LAMINATE W/ DIGITAL PRINT	NEVMAR	MATCH ARCHITECTS SAMPLE	SUPER MATTE (SM)	PANCLAM	NA	MATCH ARCHITECTS SAMPLE, ARTWORK TO BE SUPPLIED BY ARCHITECT	CLASS A IN ACCORDANCE WITH ASTM E84 AND/OR UL 723
GLASS								
GL-1	1/4" GLASS	LOW IRON TEMPERED	CLEAR	NA	NA	1/4"	DECORATIVE GLAZING AND PATIENT ROOM DOOR FIXED SIDE LITES	CLASS A IN ACCORDANCE WITH ASTM E84 AND/OR UL 723
GL-2	FIRE RATED GLAZING IN DOORS	FIRE LITE PLUS	CLEAR	NA	TECHNICAL GLASS PRODUCTS	TBD	-	CLASS A IN ACCORDANCE WITH ASTM E84 AND/OR UL 723
GL-3	EXTERIOR WINDOW GLAZING	DOUBLE PANE INSULATING GLASS UNITS	CLEAR	NA	NA	PER SPEC	-	CLASS A IN ACCORDANCE WITH ASTM E84 AND/OR UL 723
GL-4	LAMINATED GLASS	2 LAYERS 1/4" CLEAR LOW IRON GLASS	CLEAR	NA	BESAM	9/16"	GLAZING FOR SLIDING PATIENT ROOM DOORS	CLASS A IN ACCORDANCE WITH ASTM E84 AND/OR UL 723
PAINT								
PNT-1	DURA POXY +	LOW VOC	WHITEST WHITE KM483	EGGSHELL	KELLY MOORE	NA	GENERIC REF - WHITE	CLASS A IN ACCORDANCE WITH ASTM E84 AND/OR UL 723
PNT-2	DURA POXY +	LOW VOC	GRAY GHOST KM484	EGGSHELL	KELLY MOORE	NA	GENERIC REF - LIGHT GREY	CLASS A IN ACCORDANCE WITH ASTM E84 AND/OR UL 723
PNT-3	DURA POXY +	LOW VOC	GALLERY GREY KM487	EGGSHELL	KELLY MOORE	NA	GENERIC REF - DARK GREY	CLASS A IN ACCORDANCE WITH ASTM E84 AND/OR UL 723
PNT-4	DURA POXY +	LOW VOC	COTTON CANDY KM635-1	EGGSHELL	KELLY MOORE	NA	GENERIC REF - PURPLE	CLASS A IN ACCORDANCE WITH ASTM E84 AND/OR UL 723
PNT-5	WHITEBOARD PAINT	ReMarkable	WHITEBOARD PAINT	NA	NA	NA	WHITE	CLASS A IN ACCORDANCE WITH ASTM E84 AND/OR UL 723
WALL COVERING								
WC-1	NON-VINYL WALL COVERING	TERRALON SMOOTH	TO MATCH ARCHITECTS SAMPLE	INSTACURE TOPOCAT	MDC	NA	FOR ELEVATOR LOBBY BEHIND CLR GLASS PANELS, ARTWORK TO BE SUPPLIED BY ARCHITECT	CLASS A IN ACCORDANCE WITH ASTM E84 AND/OR UL 723
WC-2	WALL COVERING	FLASHBACK (KOREL)	8615 W45	NA	CARNEGIE FABRICS	NA	IN LACTATION ROOM	CLASS A IN ACCORDANCE WITH ASTM E84 AND/OR UL 723
SS-1	METAL WALL PANEL	STAINLESS STEEL WALL PANELS	8615 W45	NA	NA	NA	STAINLESS STEEL PANEL TO COVER (E) TILED DUMBWAITER WALLS	CLASS A IN ACCORDANCE WITH ASTM E84 AND/OR UL 723
IMPACT RESISTANT WALL COVERING								
RWC-1	IMPACT RESISTANT WALL COVERING	SPECTRIM BP VENMA WALL PROTECTION .04 THICK	OMNOVA sur(t) 3D Laminale SARINEN DRIFTWOOD	SMOOTH	SPECTRIM BP (SSI NORTH)	4'-0" X 110'-0" SHEETS	EDGES OF PANELS TO BE FINISHED W/ TRIM SUPPLIED BY MANF U.N.O. - TRIM COLOR TO MATCH ARCHITECTS SAMPLE	CLASS A IN ACCORDANCE WITH ASTM E84 AND/OR UL 723
RWC-2	IMPACT RESISTANT WALL COVERING	ACROVYN .04 THICK	WHITE #949	SUEDE	CONSTRUCTION SPECIALTIES	4'-0" X 110'-0" SHEETS	INSTALLED W/ VERTICAL SEAMS + W/ TOP CAP	CLASS A IN ACCORDANCE WITH ASTM E84 AND/OR UL 723
RWC-3	IMPACT RESISTANT WALL COVERING	ACROVYN .04 THICK	FOG (GRAY) #055	SUEDE	CONSTRUCTION SPECIALTIES	4'-0" X 110'-0" SHEETS	INSTALLED W/ VERTICAL SEAMS + W/ TOP CAP	CLASS A IN ACCORDANCE WITH ASTM E84 AND/OR UL 723
RWC-4	IMPACT RESISTANT WALL PANEL	SPECTRIM BP VENMA TRIM	TO MATCH ARCHITECTS SAMPLE	TO MATCH ARCHITECTS SAMPLE	SPECTRIM BP (SSI NORTH)	1 1/2" W X 18" D X VARIES H	TRIM PIECES	CLASS A IN ACCORDANCE WITH ASTM E84 AND/OR UL 723
RWC-5	IMPACT RESISTANT WALL PANEL	INPRO ASPEX	CUSTOM GRAPHIC	SMOOTH	INPRO	4'-0" X 110'-0" SHEETS	INSTALLED FULL HEIGHT W/ VERTICAL OR HORIZONTAL SEAMS TYP IN PATIENT RMS, MINIMIZE SEAMS IN OTHER LOCATIONS	CLASS A IN ACCORDANCE WITH ASTM E84 AND/OR UL 723

KEY	TYPE	PRODUCT	COLOR	FINISH	MANUFACTURER	SIZE	COMMENTS	FRAME SPREAD AND SMOKE-DEVELOPED...
FABRIC MATERIAL								
Not used	PANEL FACING MATERIAL	FLASHBACK	6615W45	NA	CARNEGIE FABRICS	REFER TO DRAWINGS	-	CLASS A IN ACCORDANCE WITH ASTM E84 AND/OR UL 723
Not used	PANEL FACING MATERIAL	DASH	6620W55	NA	CARNEGIE FABRICS	REFER TO DRAWINGS	-	CLASS A IN ACCORDANCE WITH ASTM E84 AND/OR UL 723
GLAZING FILMS								
SWF-1	CLEAR SAFETY AND SECURITY WINDOW FILM	SCOTCHSHIELD ULTRA 8600 SAFETY AND SECURITY WINDOW FILM	CLEAR	NA	3M	6 MILS	TO BE USED ON EXISTING WINDOW LOWER PANE (BELOW 18") AND ON EXISTING WINDOW PANES LOCATED INSIDE TOILET ROOMS...	CLASS A IN ACCORDANCE WITH ASTM E84 AND/OR UL 723
DSF-1	DECORATIVE SURFACE WINDOW FILM	TAKEFORM-GHOST-AMPLIFY	100% WHITE	NA	TAKEFORM	3 MIL - 60" WIDE ROLL	-	CLASS A IN ACCORDANCE WITH ASTM E84 AND/OR UL 723
HAND RAIL								
HND RL-1	HANDRAIL, CIRCULAR, STAINLESS STEEL	HR5-6C HANDRAIL	304 STAINLESS STEEL	#4 SATIN FINISH	CONSTRUCTION SPECIALTIES	1 1/2" X LENGTH VARIES	-	CLASS A IN ACCORDANCE WITH ASTM E84 AND/OR UL 723
CORNER GUARD								
CG-1	STAINLESS STEEL CORNER GUARD- SURFACE MOUNT	CO-8M00A (1" LEGS)	304 STAINLESS STEEL	WHITE	CONSTRUCTION SPECIALTIES	1' X 1' WINGS X HEIGHT VARIES	ADHERED W/ MANUFACTURER'S HEAVY DUTY ADHESIVE	CLASS A IN ACCORDANCE WITH ASTM E84 AND/OR UL 723
CG-2	STAINLESS STEEL CORNER GUARD- SURFACE MOUNT	CO-8M00A (1/2" LEGS AT WARDROBES)	POWER COATED WHITE	WHITE	CONSTRUCTION SPECIALTIES	1/2" X 1/2"	ADHERED W/ MANUFACTURER'S HEAVY DUTY ADHESIVE	CLASS A IN ACCORDANCE WITH ASTM E84 AND/OR UL 723
CG-3	STAINLESS STEEL CORNER GUARD- SURFACE MOUNT	CO-8M00A (UNEQUAL LEGS AT SLIDING DOORS)	304 STAINLESS STEEL	WHITE	CONSTRUCTION SPECIALTIES	2' X 4"	ADHERED W/ MANUFACTURER'S HEAVY DUTY ADHESIVE	CLASS A IN ACCORDANCE WITH ASTM E84 AND/OR UL 723
CG-4	STAINLESS STEEL CORNER GUARD- SURFACE MOUNT	CO-8M00A (2" LEGS)	304 STAINLESS STEEL	WHITE	CONSTRUCTION SPECIALTIES	2' X 2"	ADHERED W/ MANUFACTURER'S HEAVY DUTY ADHESIVE	CLASS A IN ACCORDANCE WITH ASTM E84 AND/OR UL 723
END WALL GUARD								
EWG	STAINLESS STEEL END WALL GUARD- SURFACE MOUNT	STAINLESS STEEL END WALL GUARD	304 STAINLESS STEEL	NO 4 SATIN	INPRO OR ACROVYN	MATCH WALL WIDTH	2" WINGS PREFERRED	CLASS A IN ACCORDANCE WITH ASTM E84 AND/OR UL 723
CRASH RAIL								
CSR RL- 1	CRASH RAIL	ACROVYN SCR-40N	WHITE #949	SUEDE	CONSTRUCTION SPECIALTIES	4" X LENGTH VARIES	-	CLASS A IN ACCORDANCE WITH ASTM E84 AND/OR UL 723
ACOUSTIC CEILING PANEL								
ACP-1	ACOUSTIC CEILING TILE	HEALTHZONE	WHITE	NA	ARMSTRONG	2' X 2'	15/16" LAY IN GRID	CLASS A IN ACCORDANCE WITH ASTM E84 AND/OR UL 723
ACP-2	ACOUSTIC CEILING TILE	HEALTHZONE	BLACK	NA	ARMSTRONG	2' X 2'	15/16" LAY IN GRID. TO BE USED W/ LMC-1	CLASS A IN ACCORDANCE WITH ASTM E84 AND/OR UL 723
ACP-3	ACOUSTIC CEILING TILE	HEALTHZONE	WHITE	NA	ARMSTRONG	2' X 2'	15/16" CO-EXTRUDED CLEAN ROOM GRID	CLASS A IN ACCORDANCE WITH ASTM E84 AND/OR UL 723
LINEAR METAL CEILING								
LMC-1	LINEAR METAL CEILING	PLANK	SARANTE TAN SAWN OAK S16N	NA	CEILING PLUS	REFER TO DWGS	PAIRED WITH BLACK ACOUSTIC PANELS AND BLACK HEAVY DUTY...	CLASS A IN ACCORDANCE WITH ASTM E84 AND/OR UL 723
WINDOW COVERING								
RWS-1	WINDOW COVERING	ECO VEIL SCREENS, 1350 SERIES	3% OPEN SILVER BIRCH	NA	MECHO SYSTEM	VARIES	-	PASSES NFPA 701
RWS-2	WINDOW COVERING	CHELSEA BLACKOUT, 0550 OPRAQUE	CHALK 0251	NA	MECHO SYSTEM	VARIES	PROVIDE BLACKOUT CHANNELS	PASSES NFPA 701
CUBICLE CURTAIN								
CCF-1	CUBICLE CURTAIN FABRIC	DISPOSABLE CURTAIN FABRIC	BEIGE	NA	ON THE RIGHT TRACK	NA	-	PASSES NFPA 701 - STANDARD METHODS OF FIRE TESTS FOR FLAME PROPAGATION OF TEXTILES AND FILMS
CCF-2	SHOWER CURTAIN CURTAIN	SUPER BIOSTAT SHOWER CURTAINS SYSTEM	BLUE	NA	INPRO	FULL HEIGHT	PROVIDE @ ALL SHOWER AREAS U.N.O.	PASSES NFPA 701 - STANDARD METHODS OF FIRE TESTS FOR FLAME PROPAGATION OF TEXTILES AND FILMS
CCF-3	ADA SHOWER CURTAIN CURTAIN	ADA SUPER BIOSTAT SHOWER CURTAINS SYSTEM	BLUE	NA	INPRO	FULL HEIGHT	PROVIDE @ ALL ACCESSIBLE SHOWER AREAS U.N.O.	PASSES NFPA 701 - STANDARD METHODS OF FIRE TESTS FOR FLAME PROPAGATION OF TEXTILES AND FILMS
CUBICLE CURTAIN TRACK								
CCT-1	CUBICLE TRACK	INPRO OPTITRACK OR CS 6082 CEILING TRACK	WHITE	MATTE	INPRO CONSTRUCTION SPECIALTIES	1 3/8" X 3/4"	PROVIDE SHOP DRAWINGS	ALUMINUM, CLASS A